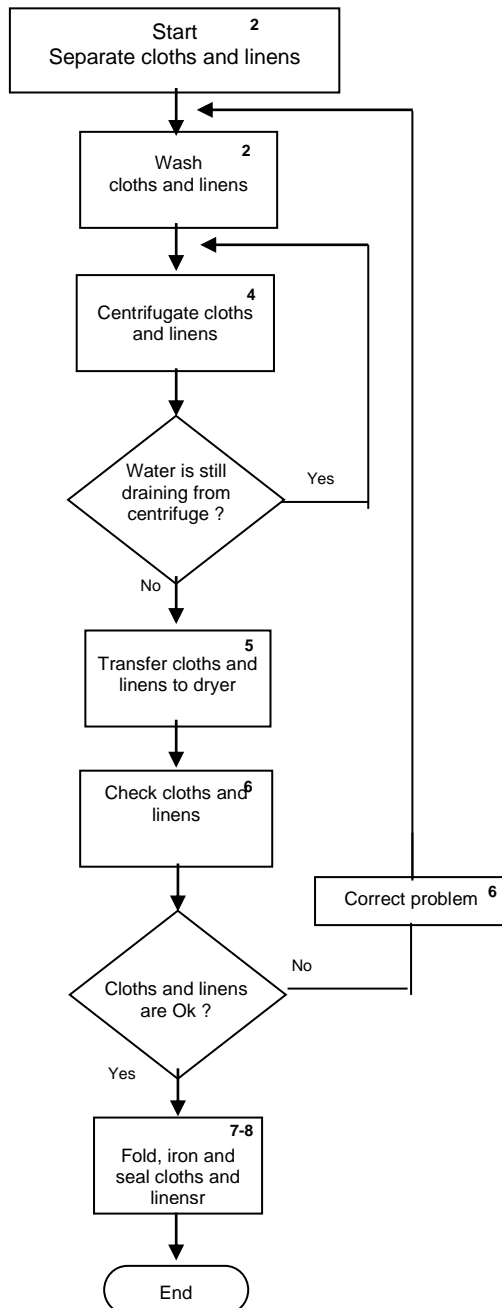


CONTROL OF REVISIONS

Initial Emission: 20XX/06/14



Details of Sub-Processes

1. All the clothes used by the clients in the suites must be sent to the laundry room for sterilization during the washing process.
2. Clothes must be washed separately according to the washing process, keeping records.
3. The water level used for washing must be adequate to the capacity of the machine:
 - Low level - 5 liters per kg
 - Medium level - 6.5 liters per kg
 - High level - 8 liters per kg

Note Wet clothes should not exceed half the basket of the machine.
4. After washing, the clothes must be placed in the centrifuge until no more water comes out.
5. After removing part of the moisture in the centrifuge, the clothes must go through the drying process at a temperature of approximately 70°C, obeying an approximate time of 20 minutes for sheets and 60 minutes for towels, floors and bathrobes. At the end of each process, allow 5 minutes to cool. Blankets used if there is no need to be washed should go through the drying process at approximately 70oC and if possible be exposed to the sun.
6. After drying, during the folding and ironing process, check for stains or other irregularities in the clothes, in existence, the piece must receive adequate treatment and return to washing, keeping records.
7. After drying, the sheets must be ironed in the calender at a temperature sufficient to smooth it out.
8. After the washing, drying and folding process, all clothes must be packed, sealed and placed on the shelves.

Records

1. Laundry - Control and Inspection
2. Washing Process - Sheets and Pillowcases
3. Washing Process - Towels, Floors and Bathrobes